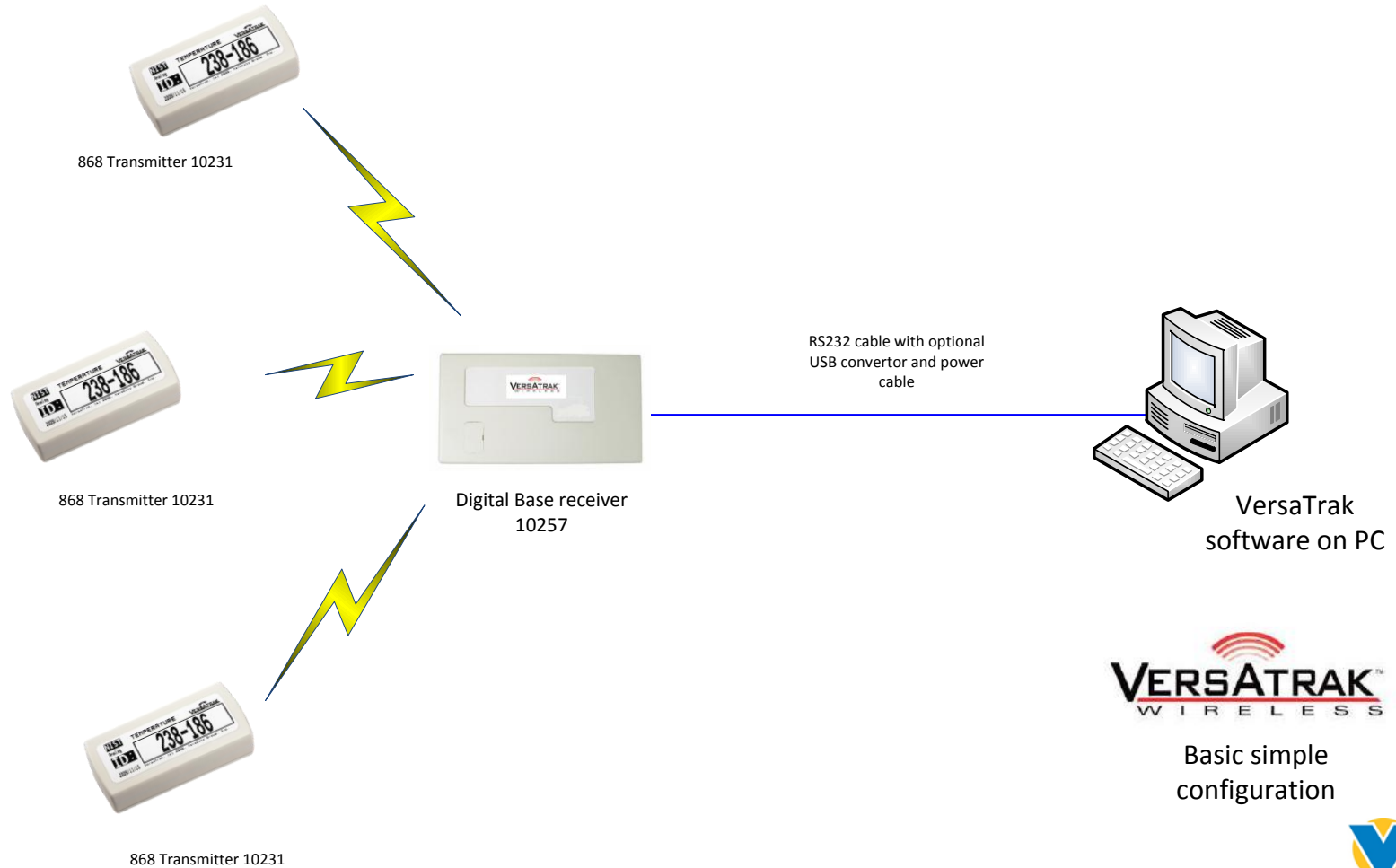




VersaTrak component configuration options for Radio and WiFi systems



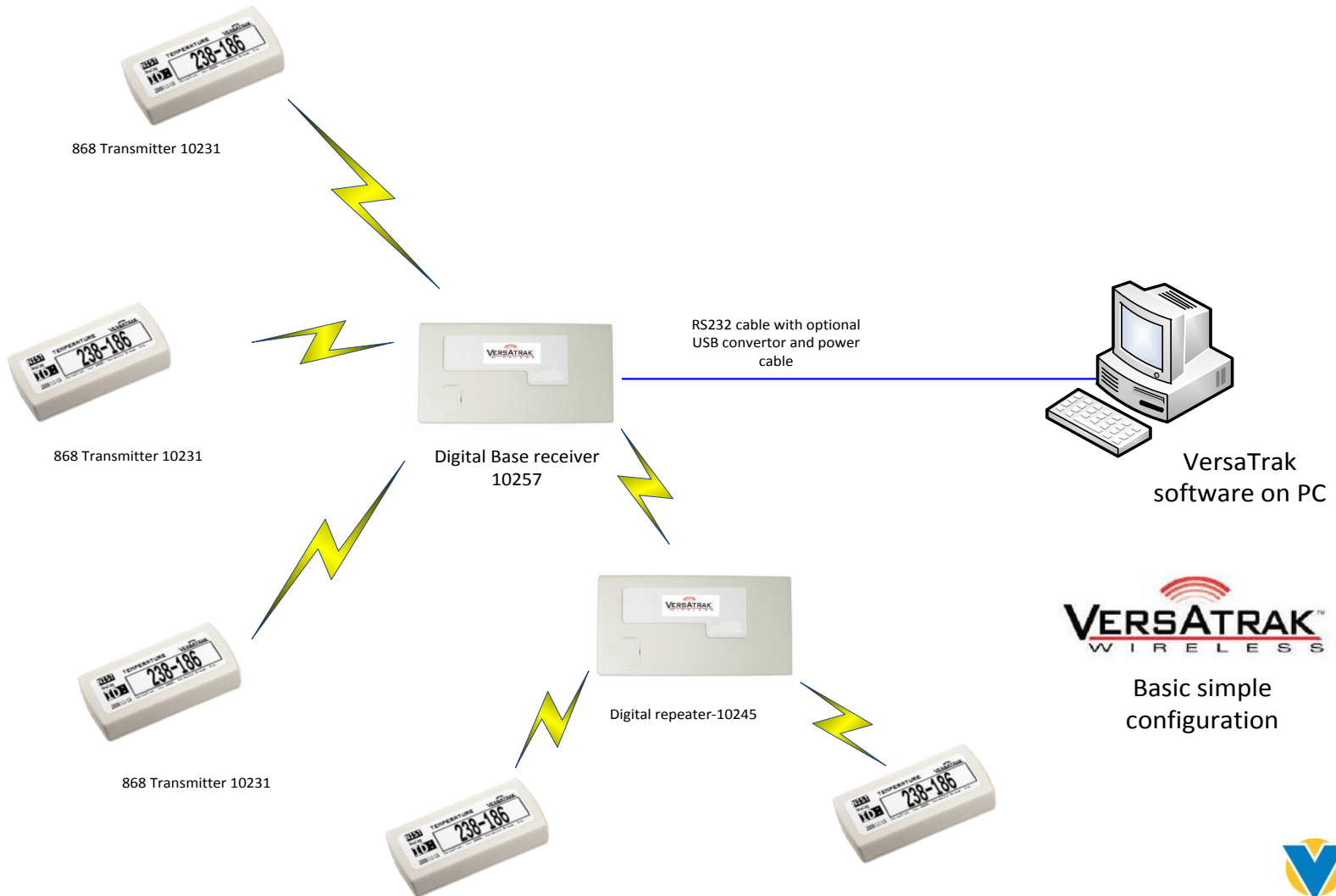
Basic 868/900Mhz configuration



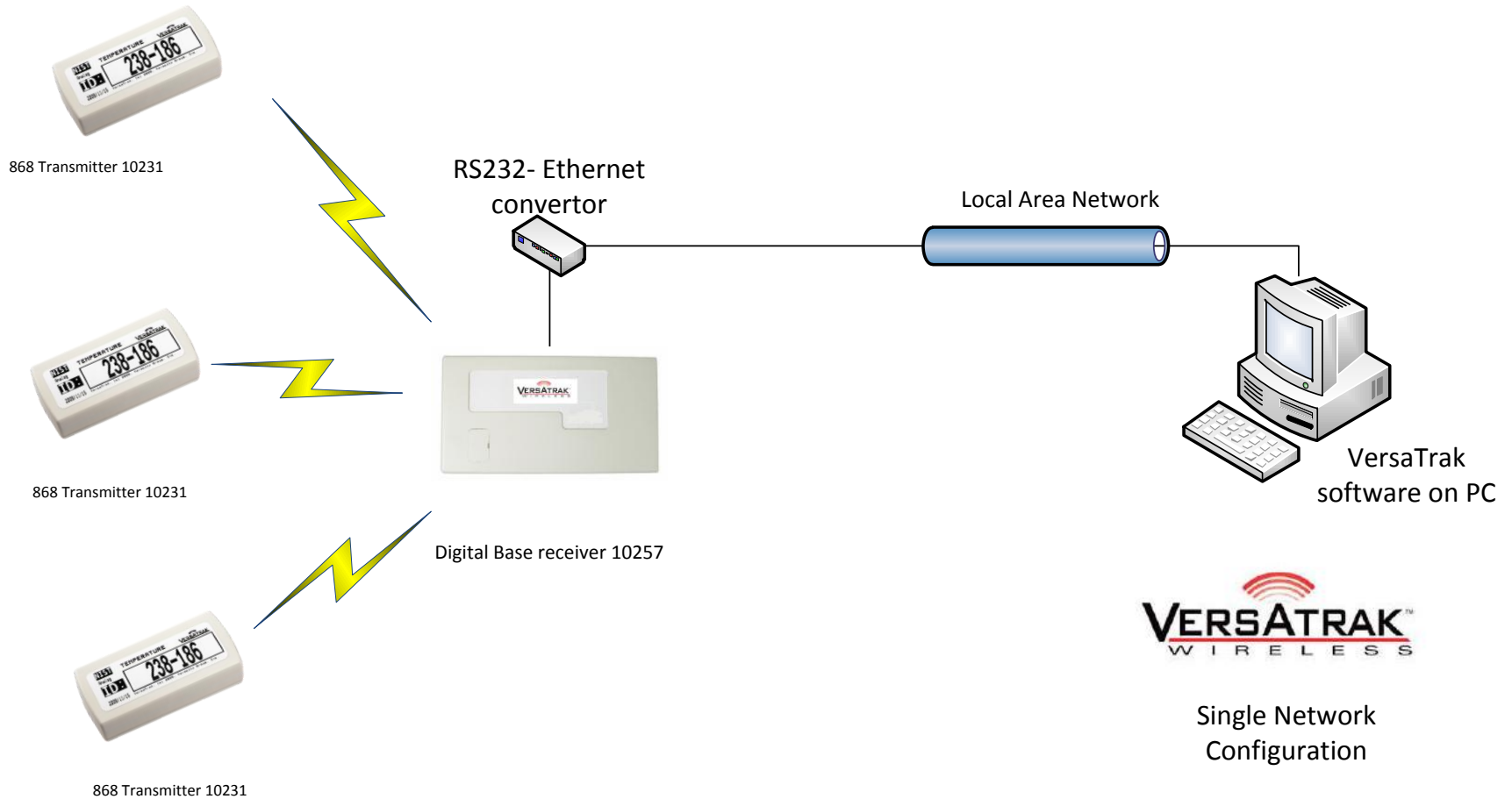
Basic simple configuration



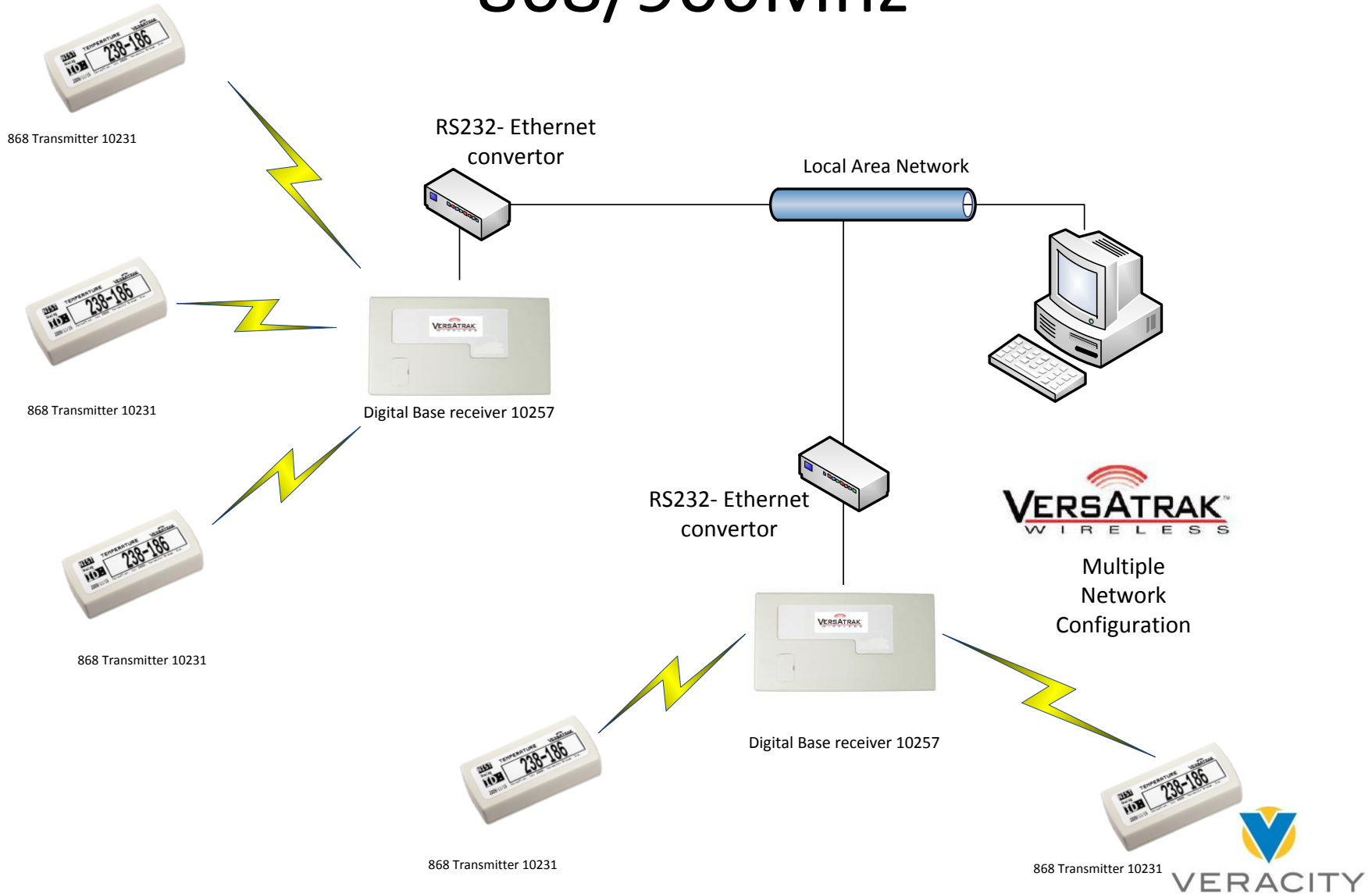
Basic configuration with Repeater 868/900MHz



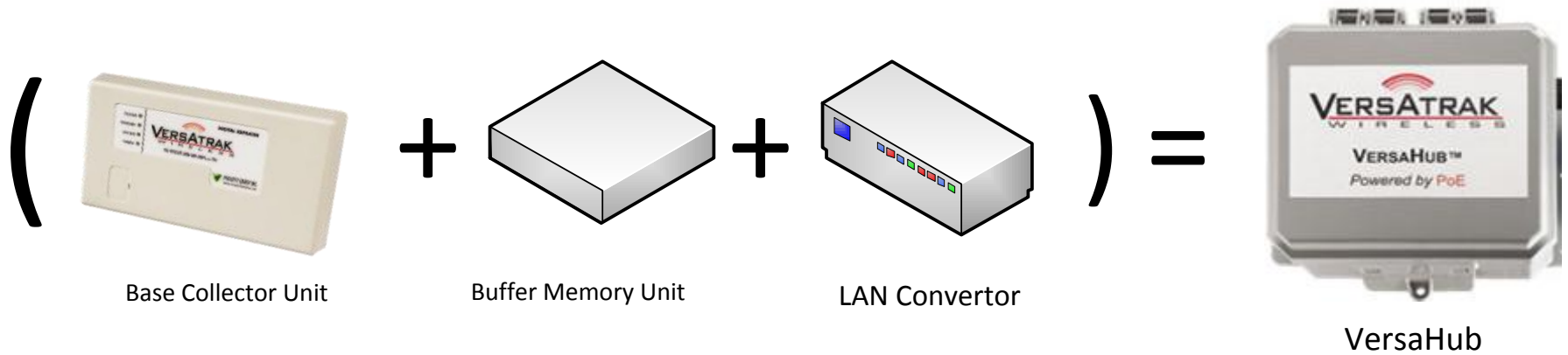
Single Network Configuration 868/900Mhz



Multiple Network configuration 868/900Mhz



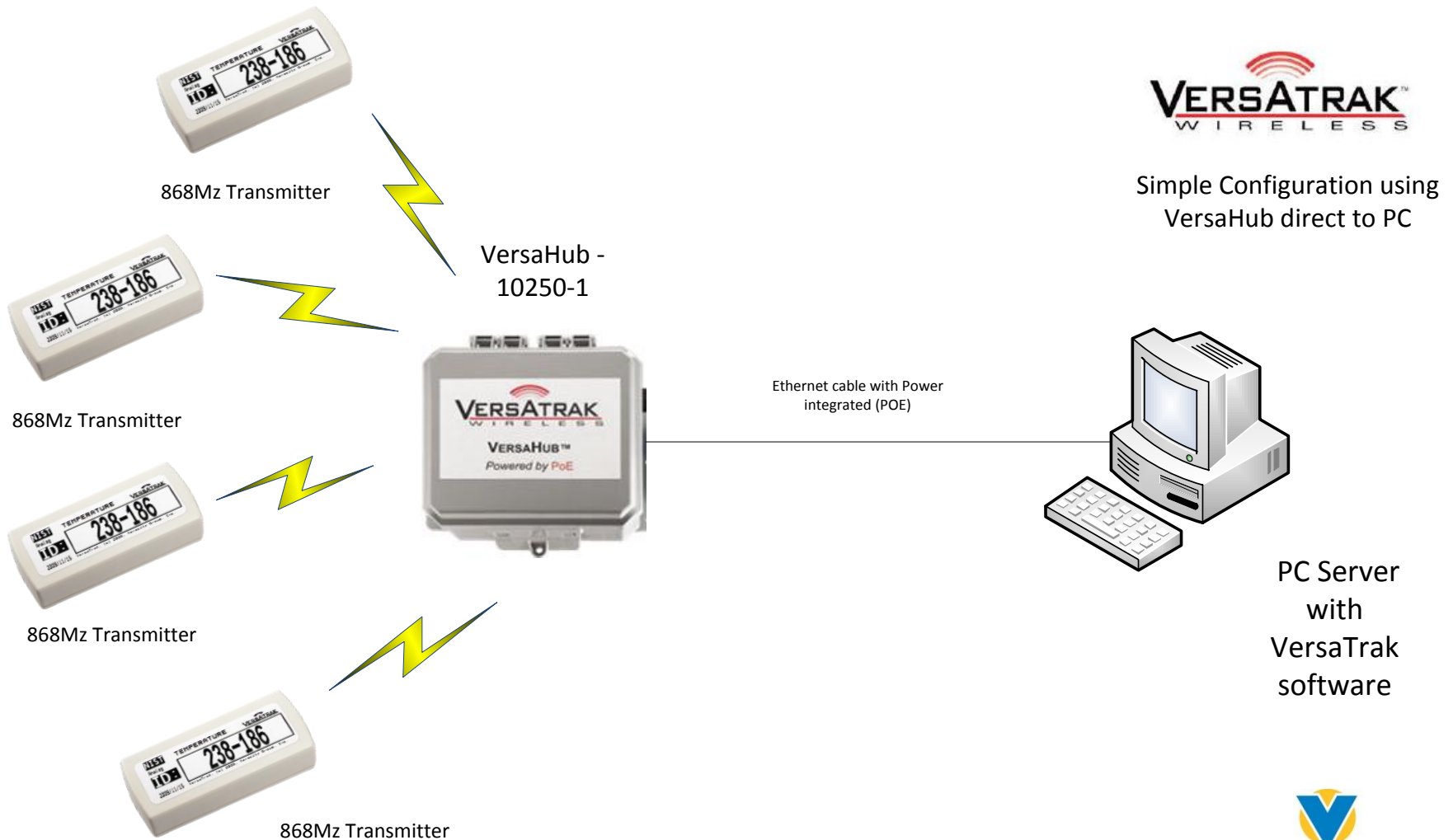
VersaHub component Integration



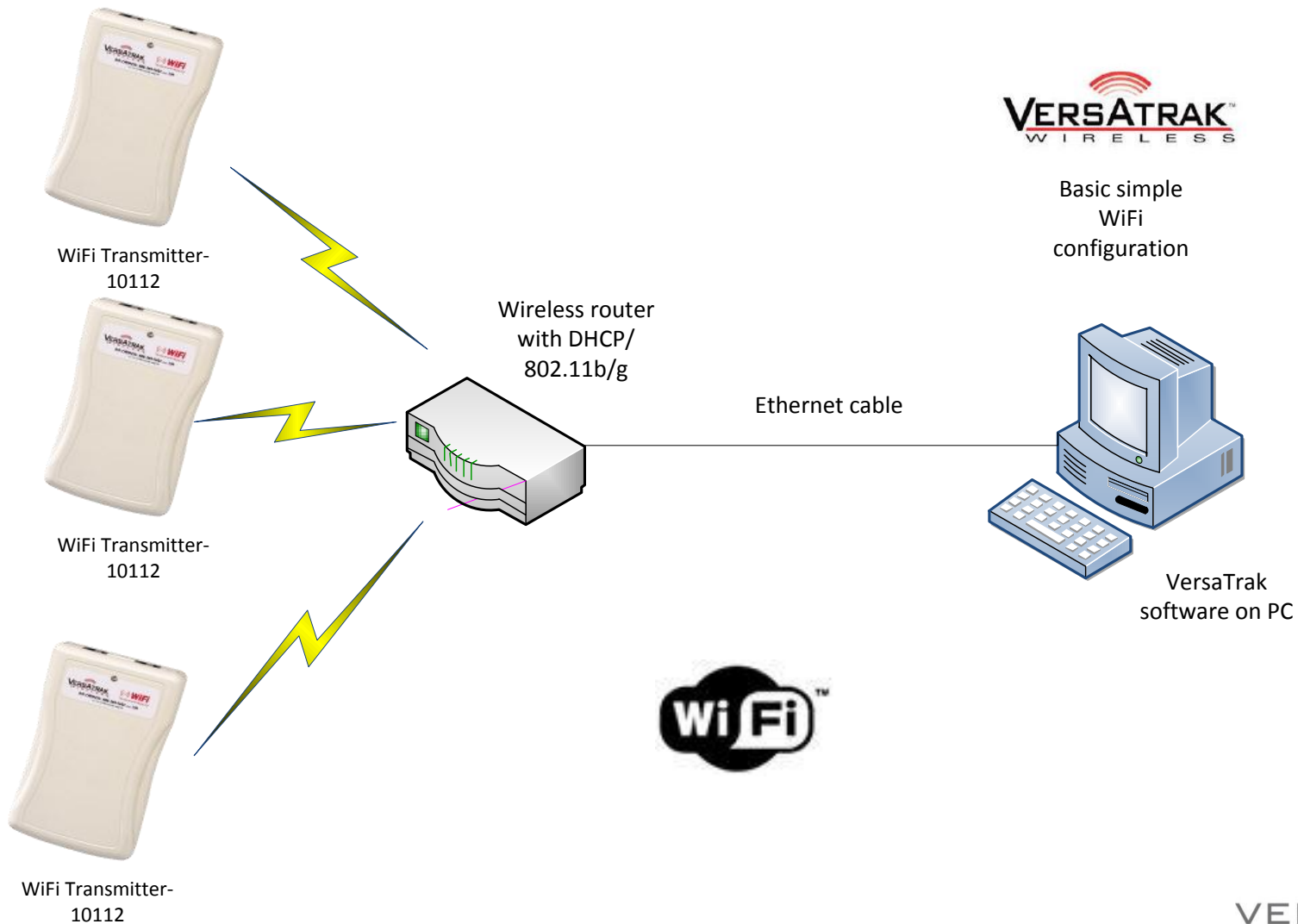
Includes power supply for all components via Ethernet cable (POE)

Basic VersaHub configuration

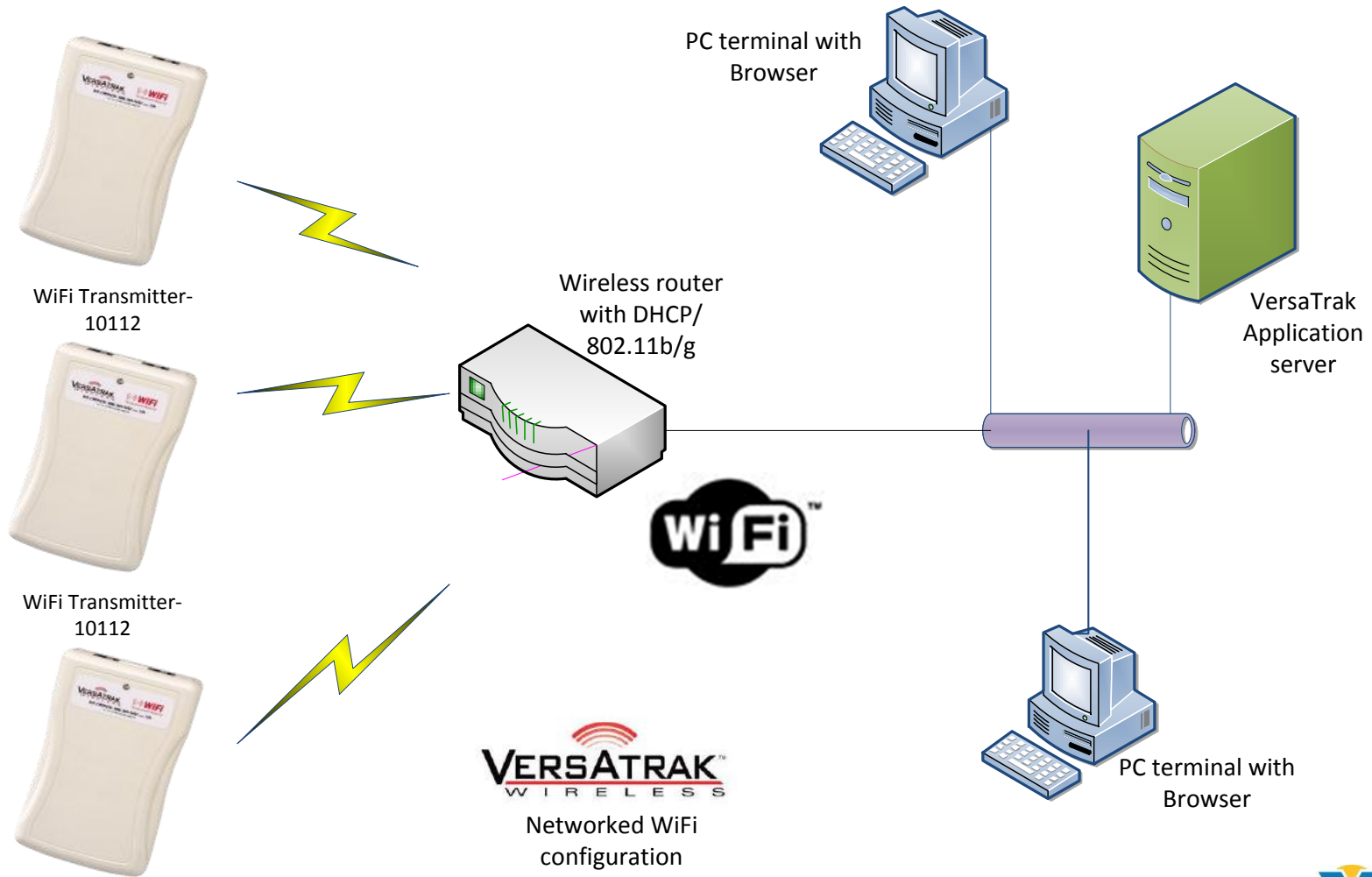
868/900Mhz



Basic WiFi configuration with Router



Networked WiFi configuration with Router



VERSATRAK™
WIRELESS
Networked WiFi
configuration